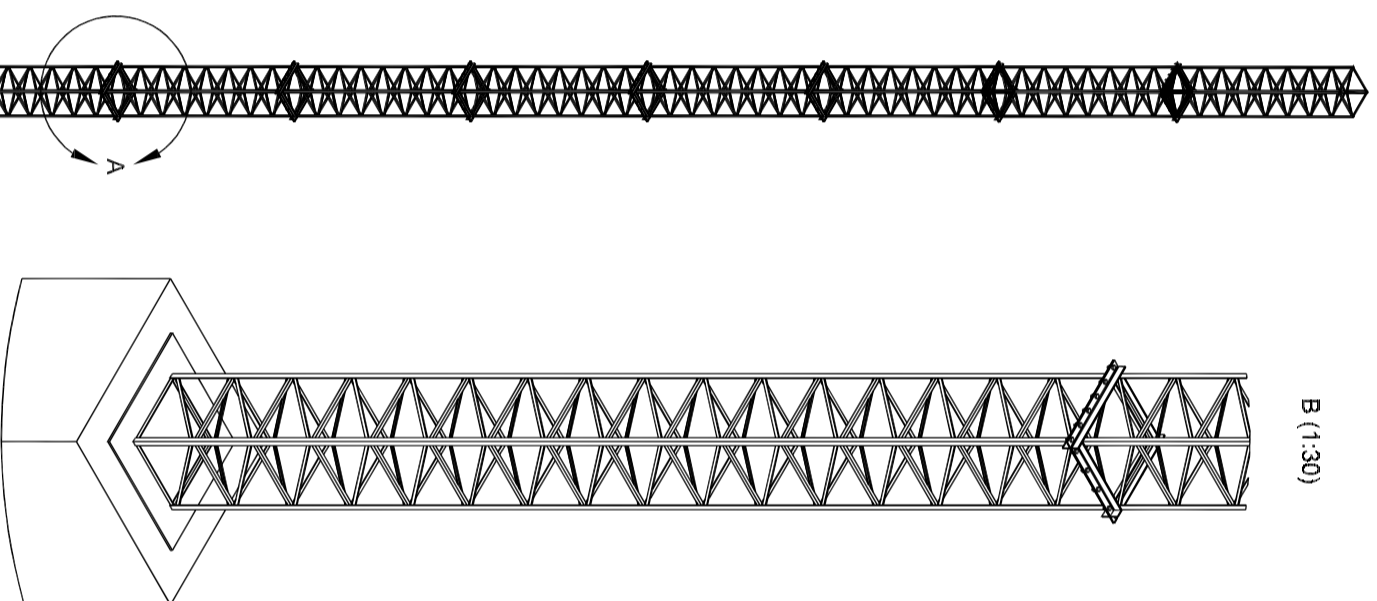
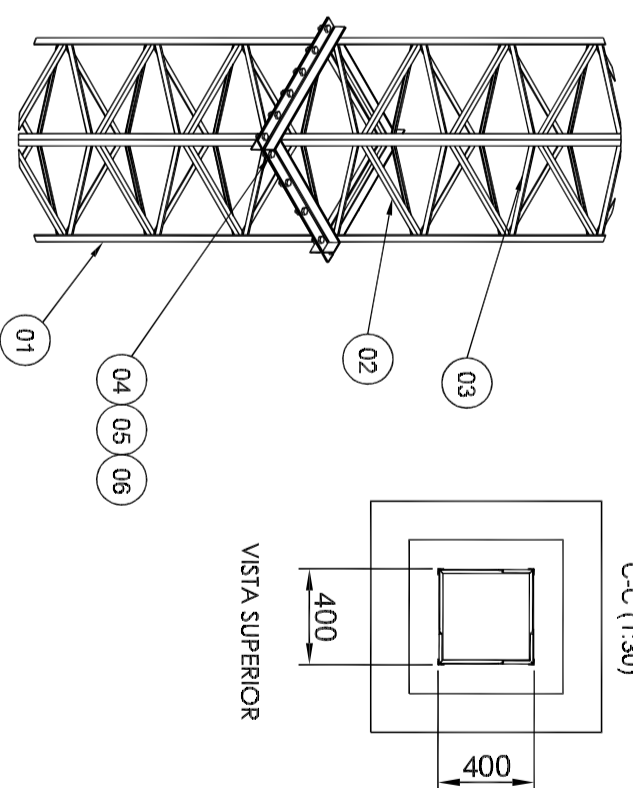


POS	DESCRIÇÃO	CARACTERÍSTICA	DIMENS.	QTD.	PESO
06	ARRUELA	Arruela, sext. zinc. Ø1/2"			
05	PORCA	Porca, sext. zinc. Ø1/2"			
04	PARAFUSO	Paraf. sext. zinc. Ø1/2" x 2"			
03	DIAGONAIS	Cont. 5/8" x 1/8"			
02	MONTANTES	Cont. 3/4" x x 1/8"			
01	BANZOS	Cont. 1.1/4" x 1/8"			

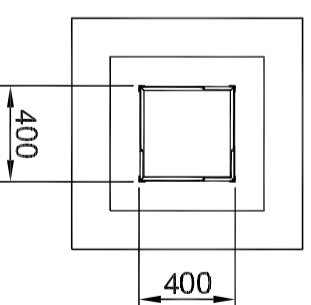
B (1:30)



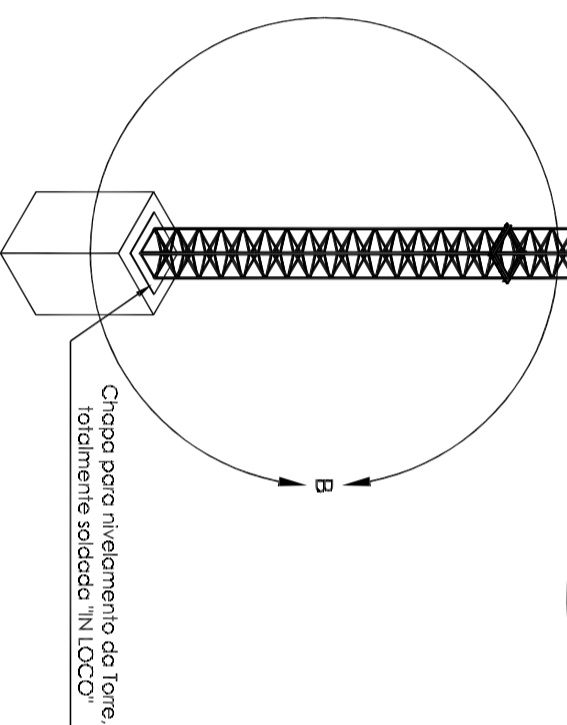
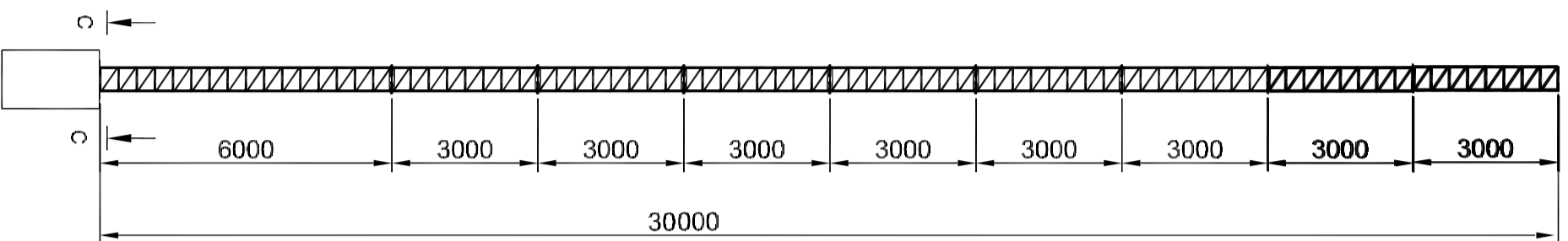
A (1:20)



C-C (1:30)



VISTA SUPERIOR



PREFEITURA MUNICIPAL DE VIADUTOS
TORRE METÁLICA PARA TRANSMISSÃO DE SINAL DE INTERNET
PROJETO TORRE 01
LOCAL:
LINHA RIO MARCELINO - VIADUTOS - RS

PROPRIETÁRIO : PREFEITURA MUNICIPAL DE VIADUTOS
 PREFEITO MUNICIPAL CLAITON DOS SANTOS BRUM

PRANCHA
03

DATA
 ABR/2023

RESPONSÁVEL TÉCNICO :
 ENG. CIVIL CRISTIANO ZORDAN CHIOCHETTA - CREA 120066

S/ESC