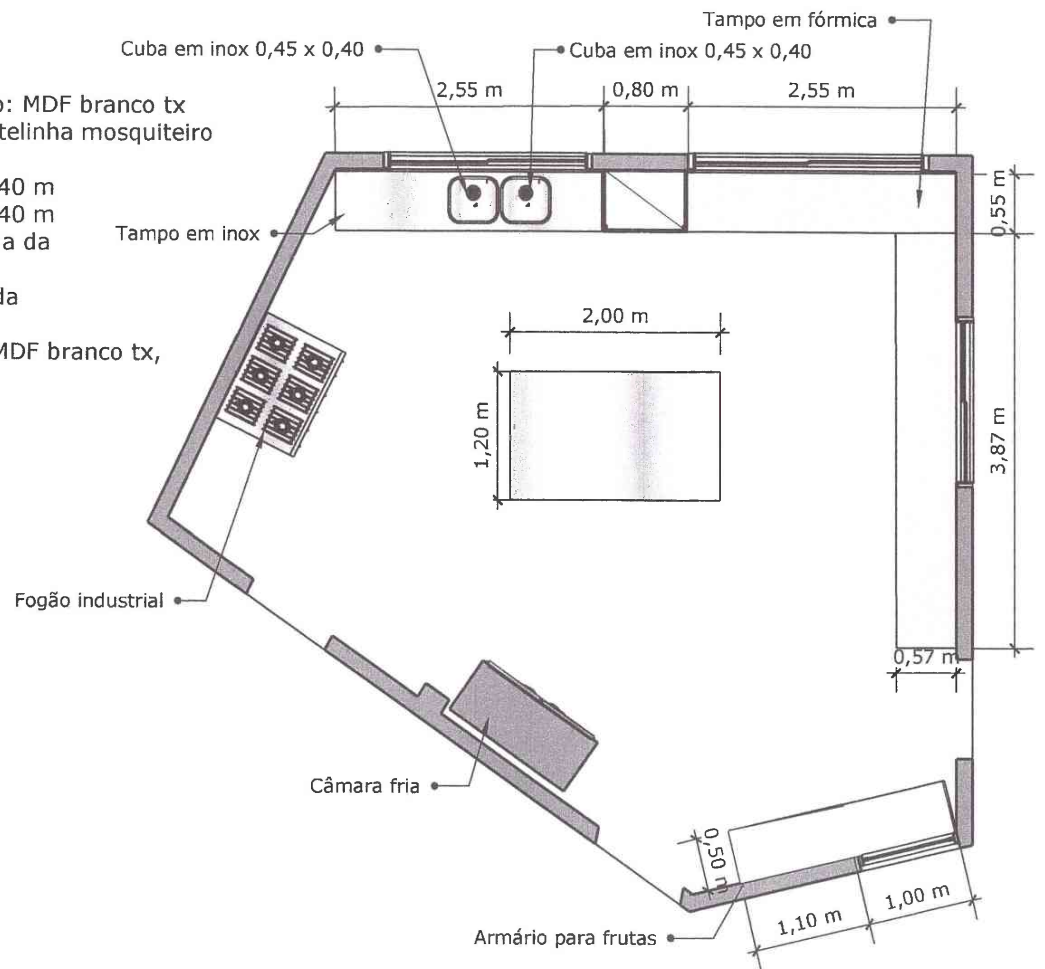


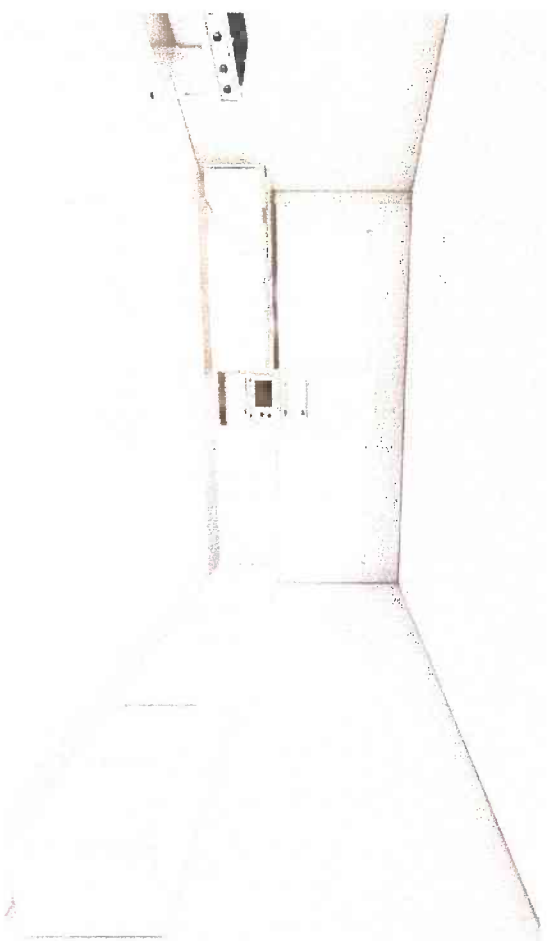
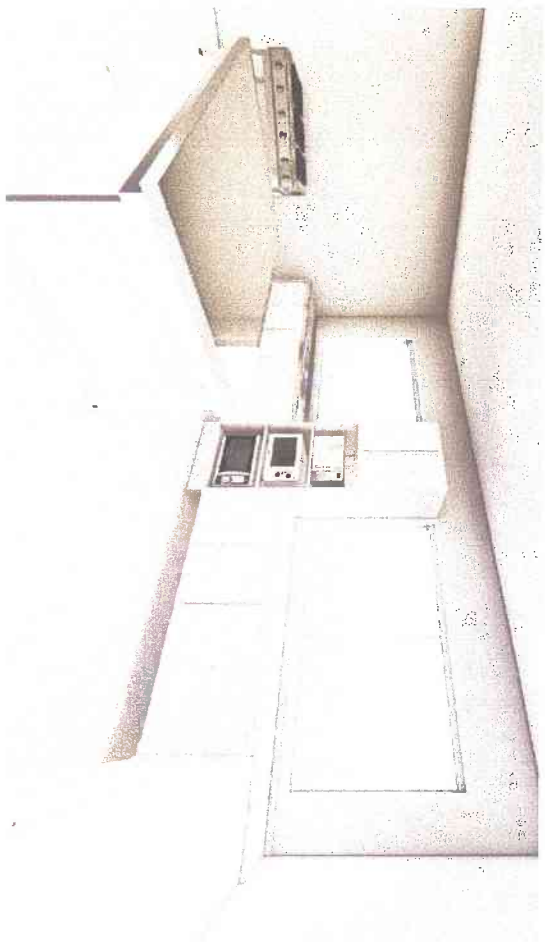
# PLANTA BAIXA

Esc. 1:50

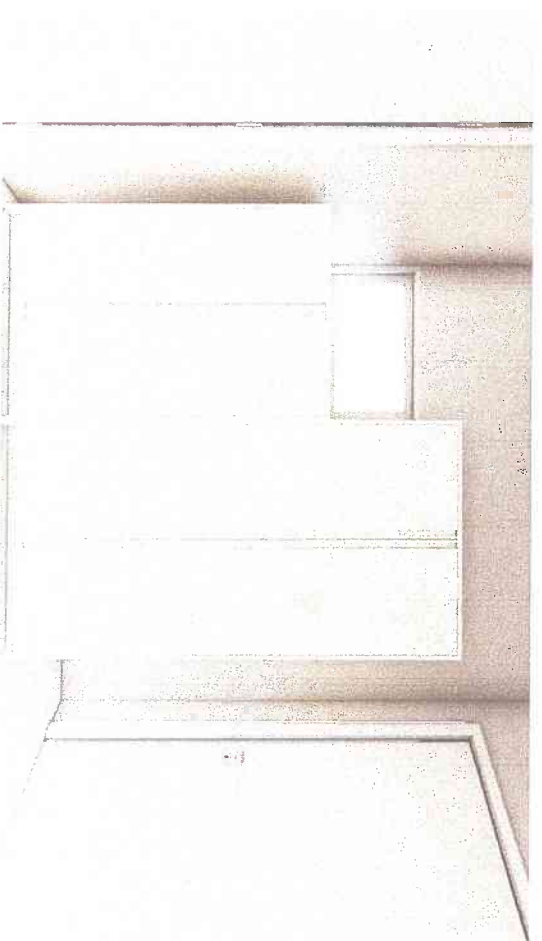
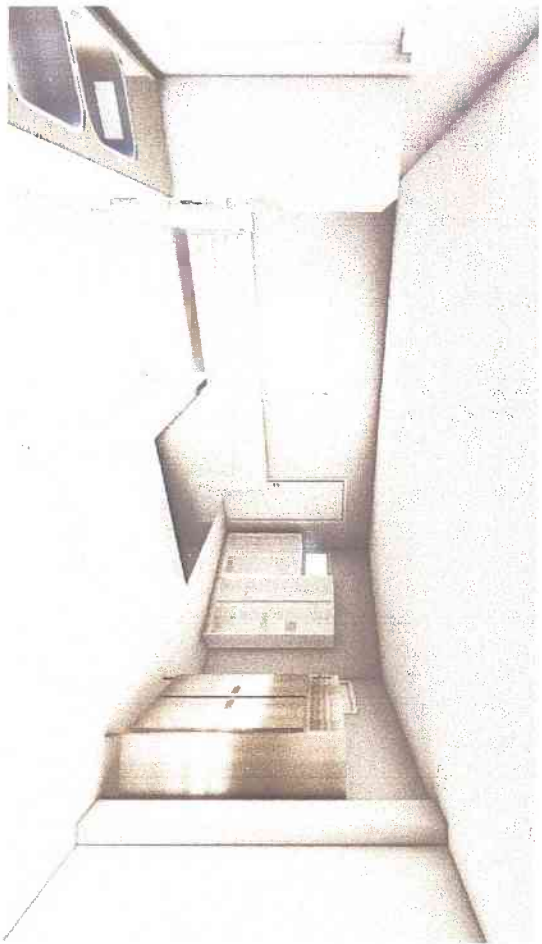
- Caixaaria e tamponamento: MDF branco tx
- Armário para frutas com telinha mosquiteiro
- Puxadores: Gola branco
- 1 cuba em inox 0,45 x 0,40 m
- 1 cuba em inox 0,45 x 0,40 m
- Tampo da lateral esquerda da cozinha: inox
- Tampo da lateral direita da cozinha: fórmica
- Mesa do meio: base em MDF branco tx, parte superior em inox



# IMAGENS

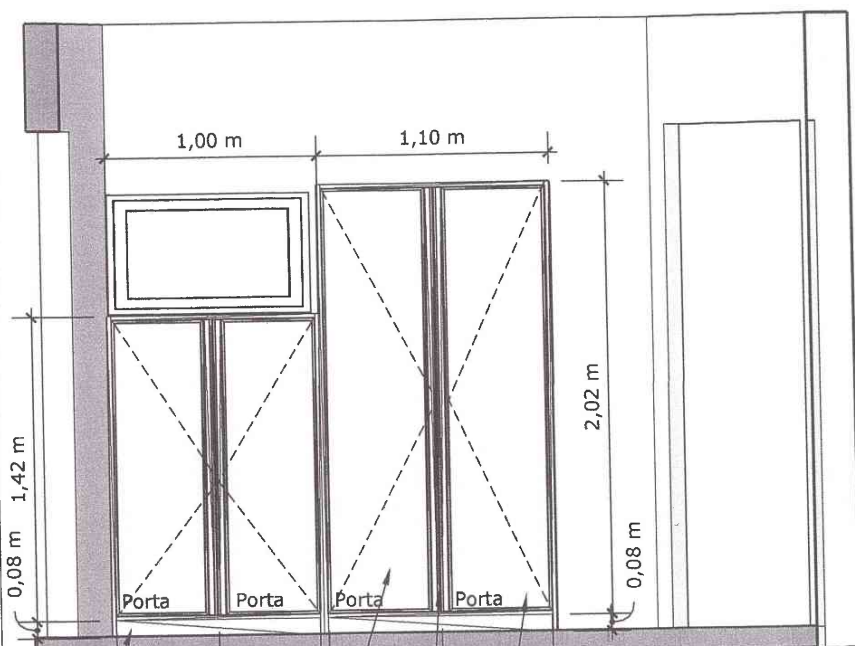


Portas com telinha mosquiteiro



## Armário para frutas

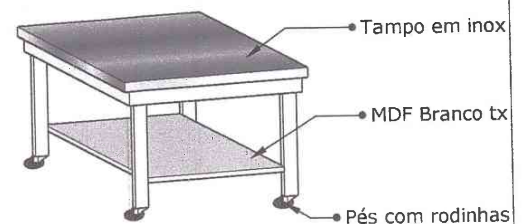
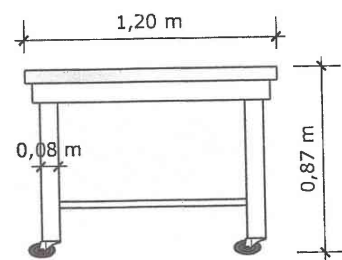
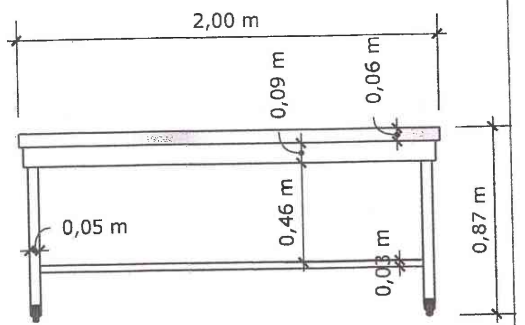
Esc. 1:25



- MDF Branco tx
- Portas com telinha mosquiteiro
- Puxador Gola branco
- Instalações elétricas que ficarem atrás do respectivo armário precisam ser embutidas no mesmo

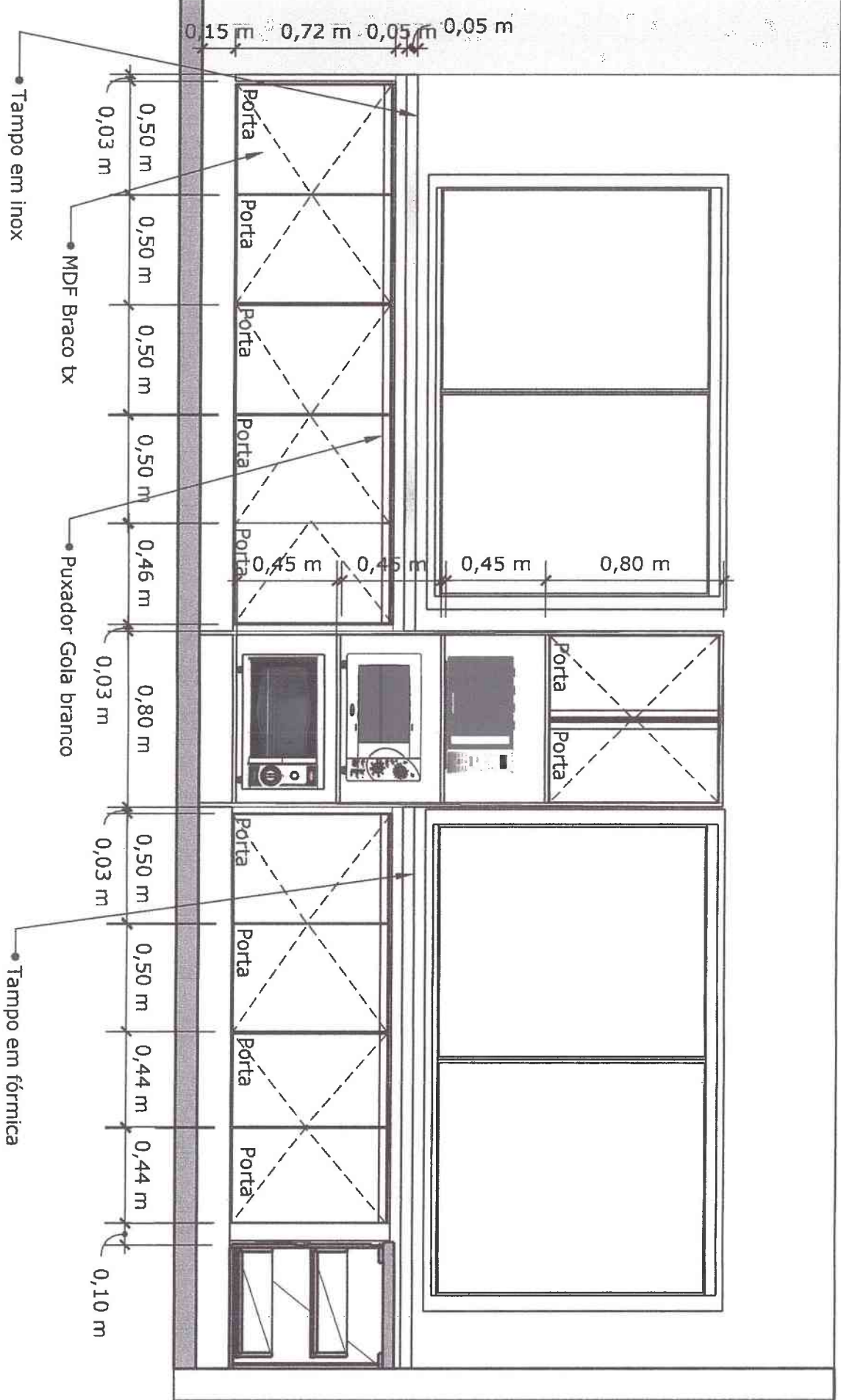
## Mesa central

Esc. 1:25



# Detalhamento

Esc. 1:25



# Detalhamento

Esc. 1:25

