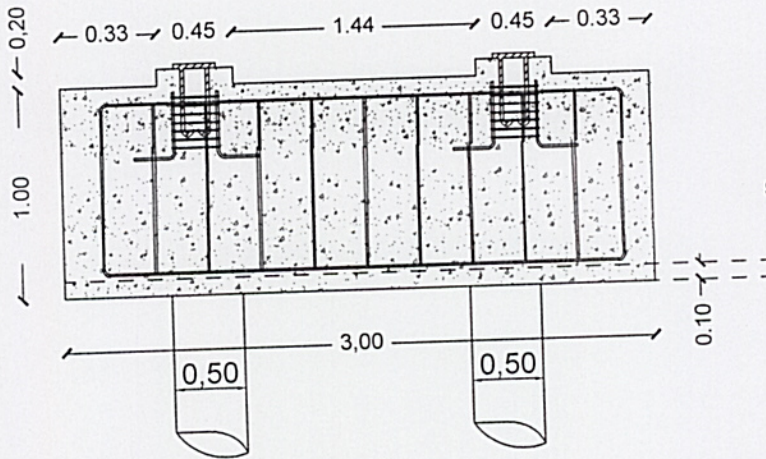
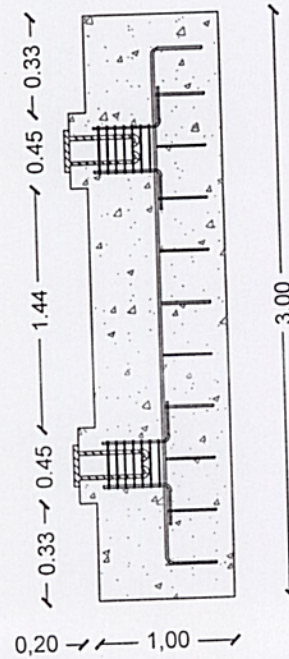
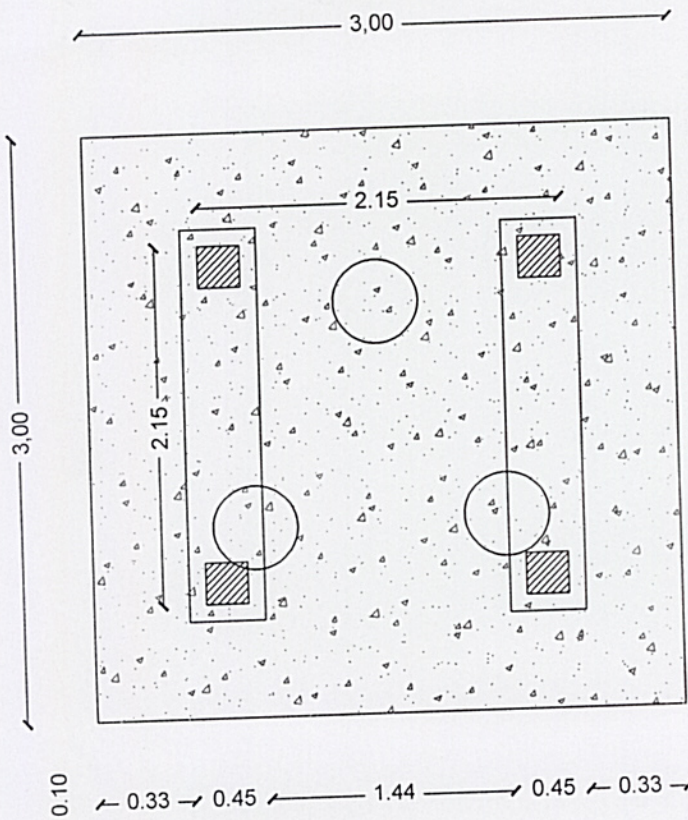
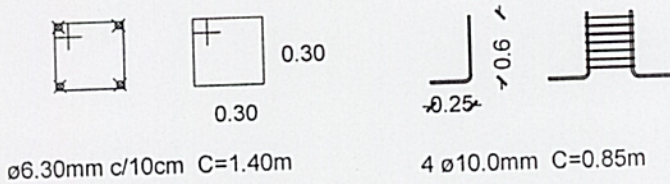


$$S1 = S2 = S3$$



OBS: é de extrema importância que os ganchos do pilarete sejam engastados por baixo da malha da sapata.
É ideal que a malha da sapata seja instalada sobre um lastro de concreto de aproximadamente 10 cm, para evitar que o aço da malha fique em contato direto com o solo.

Pilaretes:



Ø6.30mm c/10cm C=1.40m

4 Ø10.0mm C=0.85m

Ronyeri Thadeu Pereira
Engenheiro Civil
CREA-RS 215664

Cristiano Zordan Chiochetta
Eng.º Civil
CREA/RS 120006
Prefeitura Mun. de Viadutos-RS

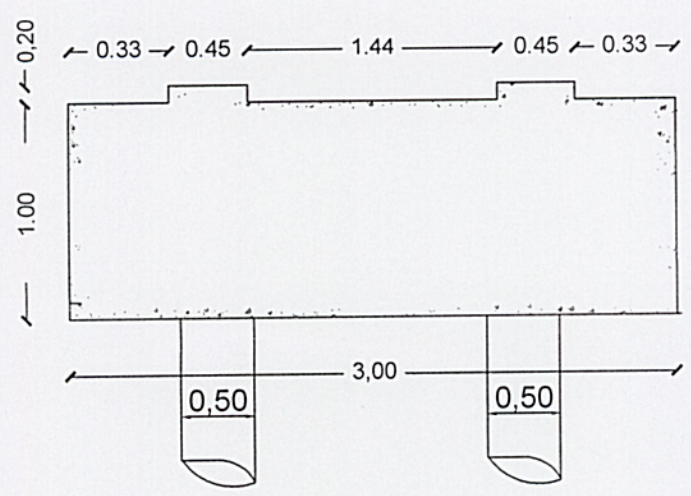
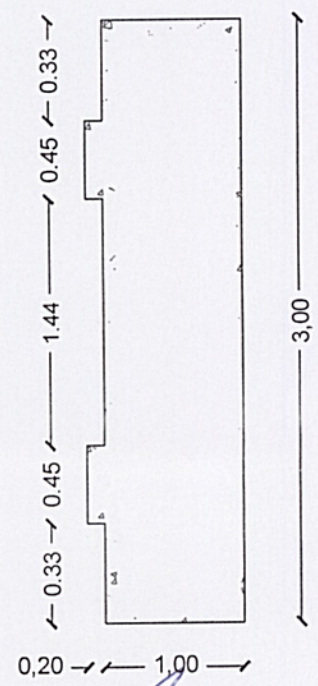
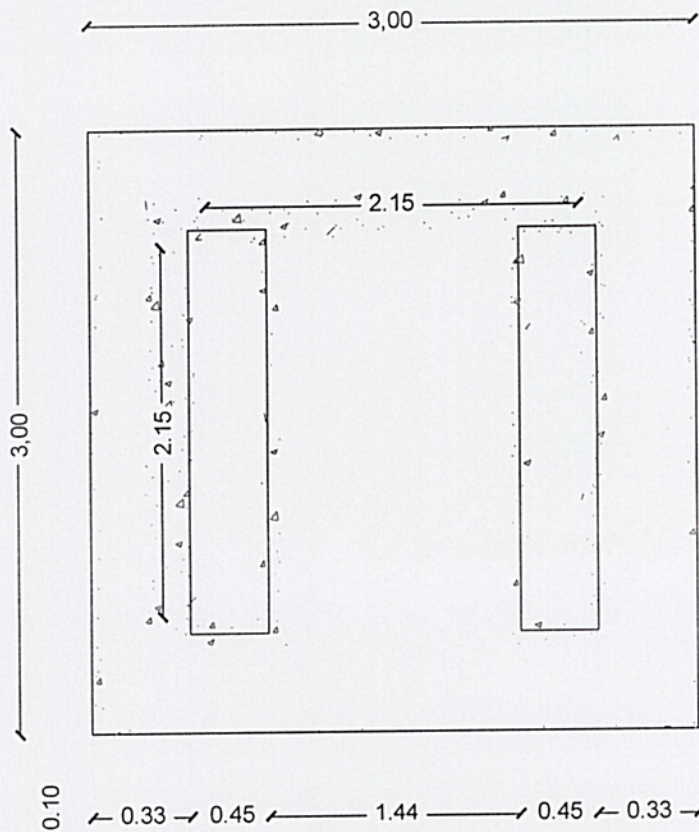
PREFEITURA MUNICIPAL DE VIADUTOS

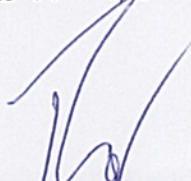
APROVADO

25 / 03 / 21

FORMAS

$$S1 = S2 = S3$$

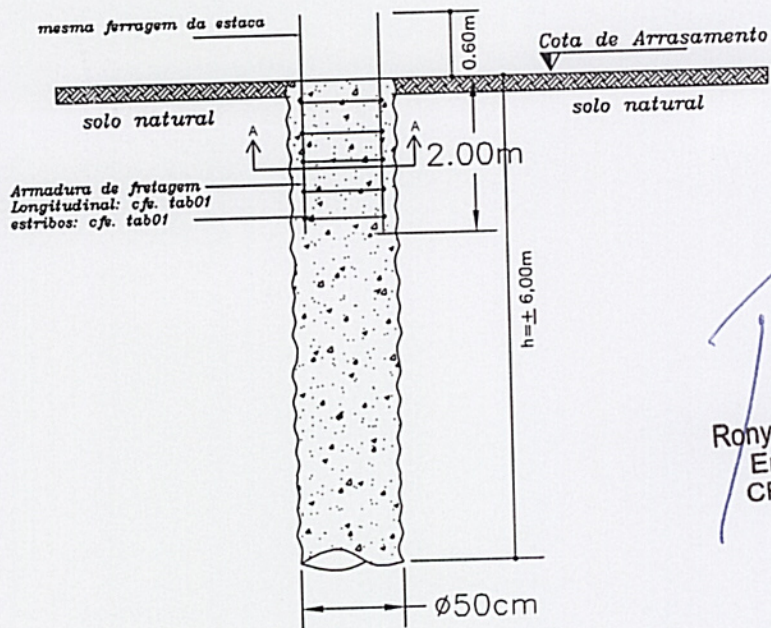
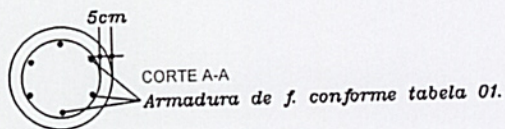
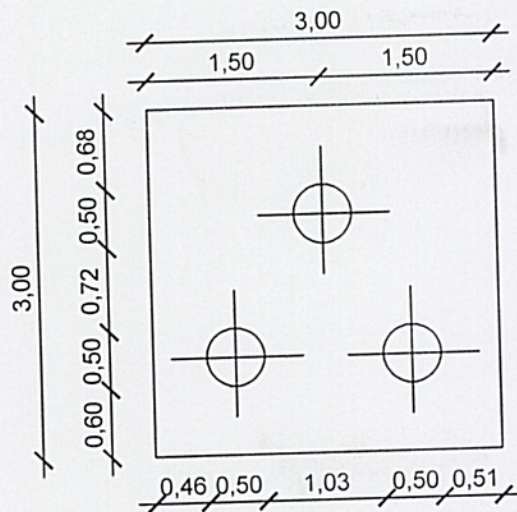



Ronyeri Thadeu Pereira
Engenheiro Civil
CREA-RS 215664


Cristiano Zordan Chiochetta
Eng.º Civil
CREA/RS 120006
Prefeitura Mun. de Viadutos-RS

PREFEITURA MUNICIPAL DE VIADUTOS

APROVADO
25 / 03 / 21



Ronyeri Thadeu Pereira
Engenheiro Civil
CREA-RS 215664

TABELA 01.

| ESTACA | ARMADURA DE FRETAGEM | |
|---------|----------------------|--------------|
| | Longitudinal | Estribos |
| Ø50,0cm | 6Ø10,0mm | 5,0mm c/15cm |

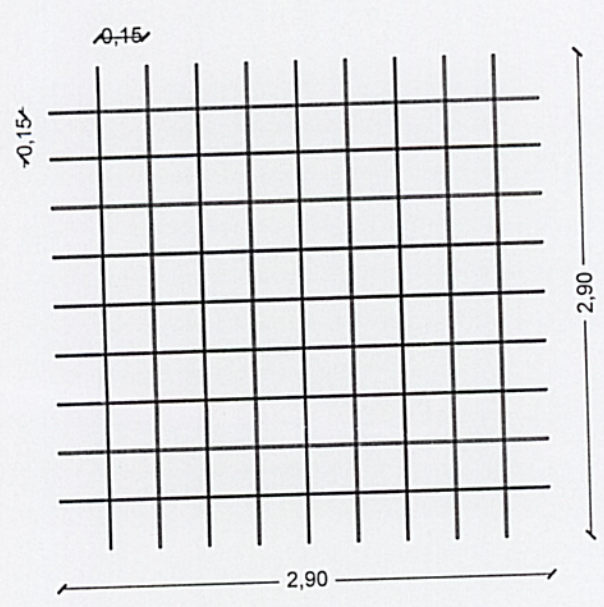
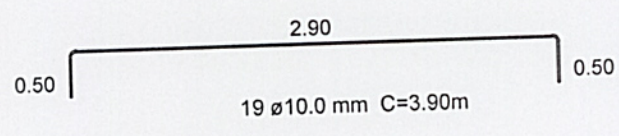
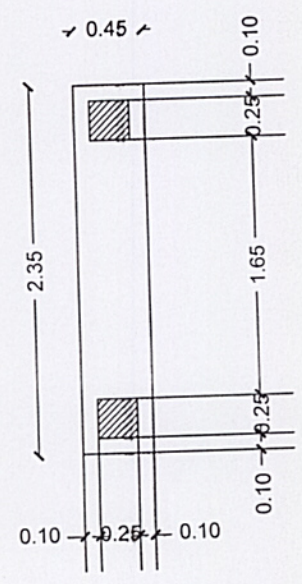
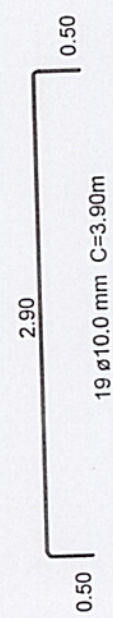
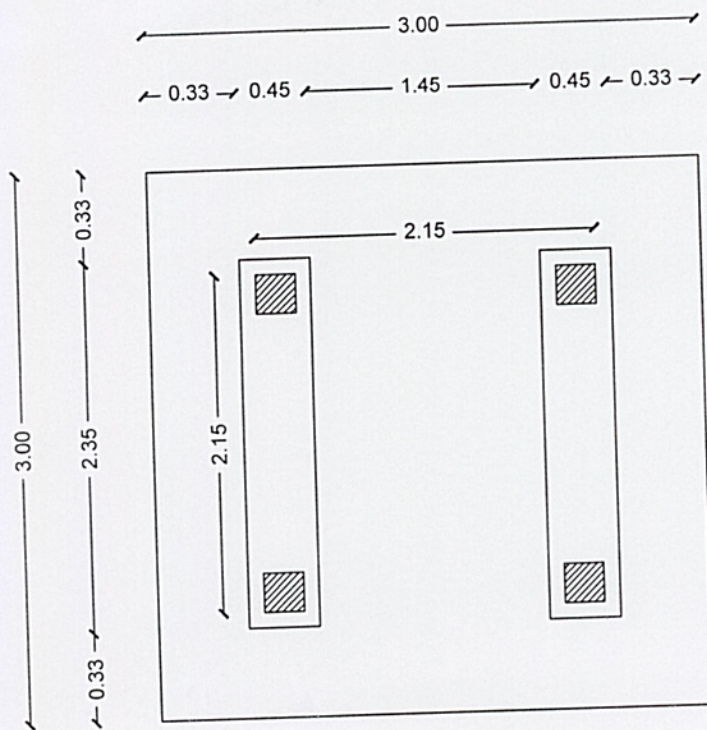
Cristiano Zordan Chiochetta
Eng.º Civil
CREA/RS 120006
Prefeitura Mun. de Viadutos-RS

PREFEITURA MUNICIPAL DE VIADUTOS

APROVADO

25 / 03 / 21

ARMADURA SUPERIOR



Ronyeri Thadeu Pereira
Ronyeri Thadeu Pereira
 Engenheiro Civil
 CREA-RS 215664

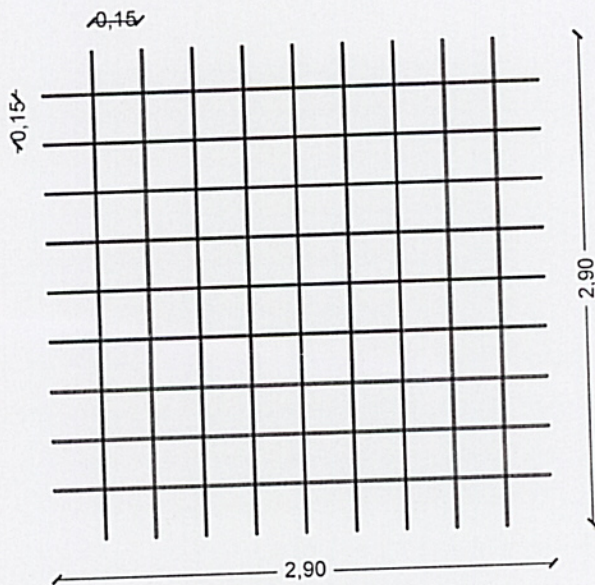
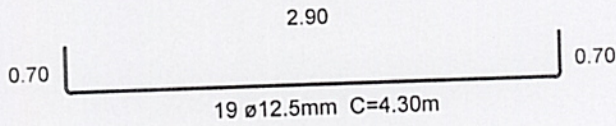
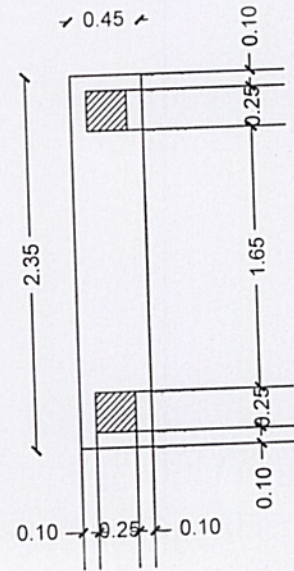
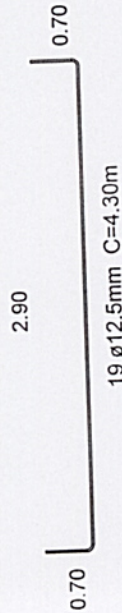
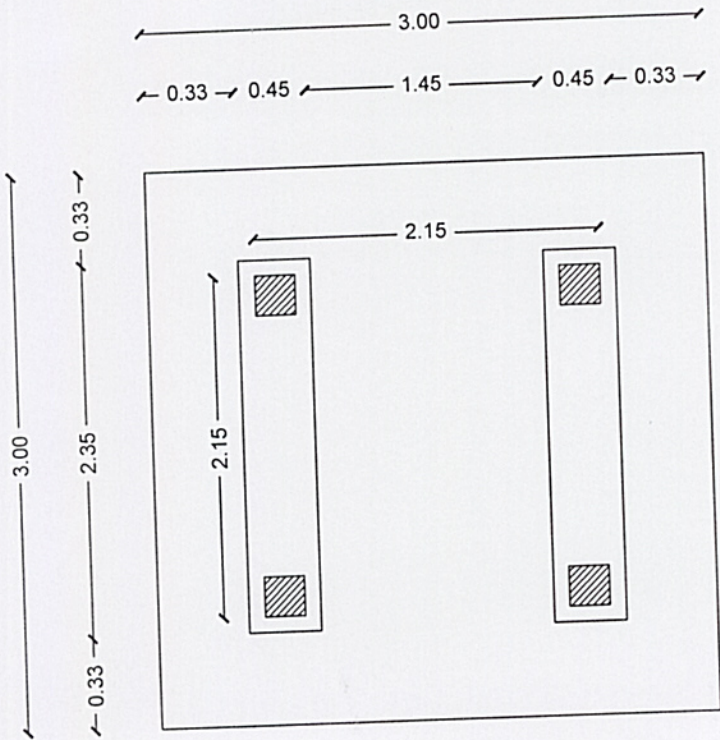
Cristiano Zordan Chiochetta
Cristiano Zordan Chiochetta
 Eng.º Civil
 CREA/RS 120006
 Prefeitura Mun. de Viadutos-RS

PREFEITURA MUNICIPAL DE VIADUTOS

APROVADO

25/03/21

ARMADURA INFERIOR



Ronyeri Thadeu Pereira
Engenheiro Civil
CREA-RS 215664

Cristiano Zordan Chiochetta
Eng.º Civil
CREA/RS 120006
Prefeitura Mun. de Viadutos-RS

PREFEITURA MUNICIPAL DE VIADUTOS

APROVADO

25/103/21