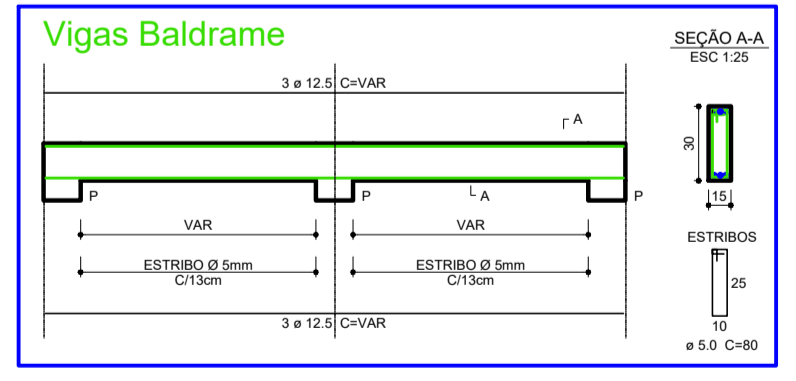
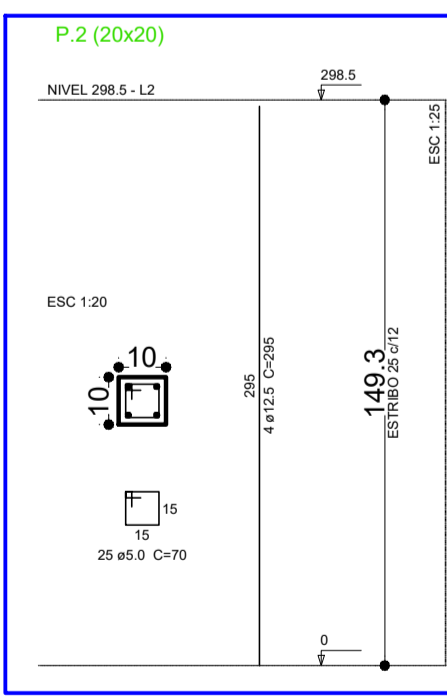
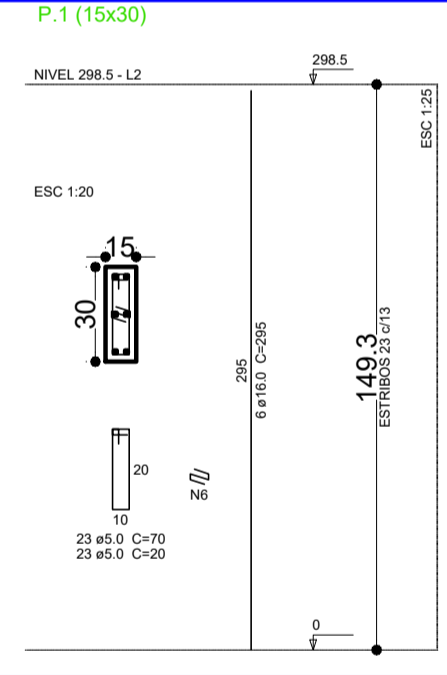
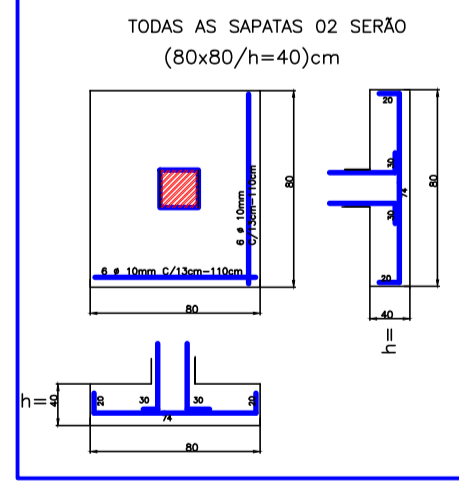
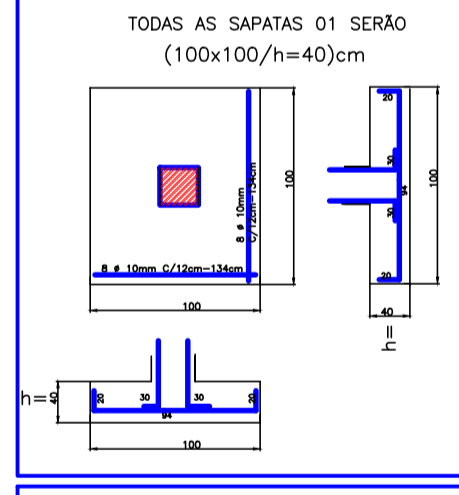
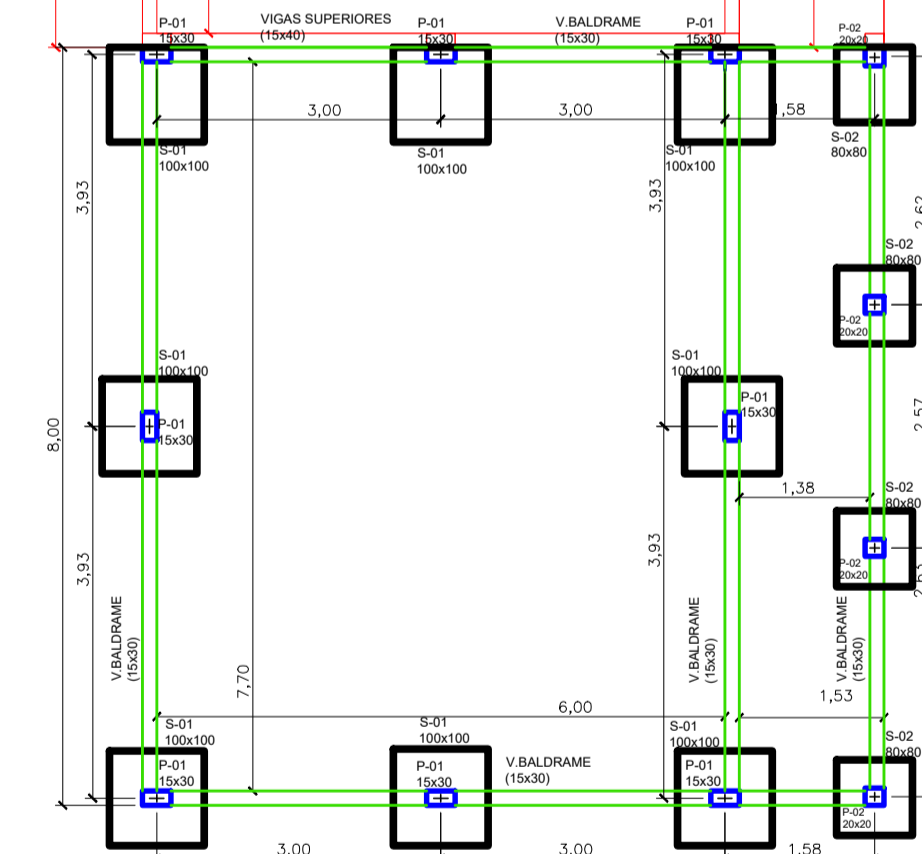


ESTRUTURAL - PLANTA DE FUNDAÇÕES



PREFEITURA MUNICIPAL DE VIADUTOS	
AMPLIAÇÃO DA ESCOLA MUNICIPAL DE ENSINO FUNDAMENTAL VIADUTOS	
PLANTA DE FUNDAÇÕES	
LOCAL: RUA BEVILAQUA	A=200,21m ²
PREFEITURA MUNICIPAL DE VIADUTOS PREFEITO CLAYTON DOS SANTOS BRUM	DATA MAI/2020
RESPONSÁVEL TÉCNICO: ENGF. CIVIL CRISTIANO ZORDAN CHIOCHETTA - CREA 120006	PRANCHA 01